



The Dial Farm

77+/- Ac

567 Dial Rd - Blountsville, Ala
GPS - 33.3232419, -86.1419334

A Farm for the Century! This 77+/- Ac Farm is Absolutely Gorgeous and fits the Notion of Going to the Farm the moment you turn off the pavement. It could be said, the farm would be fitting for ad in Paul Harvey's most Popularized Story "God made a Farmer". This Home has been Modernized for the Whole Family to Enjoy for Sunday and Holiday Feasts. 2Br's 2Ba's, Living Room and Open Floor Plan for the Great Room into the Kitchen. Updated Kitchen Cabinets, Countertop & Sink in Kitchen and Bathrooms, Stove and Stainless Hood, New Paint and Rustic Laminate Hardwood Flooring and Gas Logs in one Bedroom and the Living. Just too Much to List. Planning on Homesteading Several Families? You can because Water and Power is Convenient throughout the Property with Multiple Home sites. 2 Stock Ponds. Older Homeplace next to Large 100yr+ Water Oak and Several Pecan Trees. Approximate 49+/- Acres Fenced Pasture. Ready for Cattle. Small Creek at Back near McAlpine Rd. 3 Ponds on the Property. Approximately in Pasture. 3 Wells and Public Water. Large Barn for Equipment and 2 Stalls. Several Other Outbuildings. Detached Carport. Better Yet, Just Relax on Screen Porch and Take in the afternoon Sunset and listen to the Bells of "Our Lady of the Angels Monastery on the Mulberry River". So Don't miss this Opportunity to Own a Unique Farm to Pass on the next 100 years.

Directions from Birmingham: Go I-65 to Hanceville Exit. Take Right on Hwy 91 to Hanceville and Turn Right on Co Rd 747. Crossover Mulberry River, Road Turns into Co Rd 47. Turn on to Dial Rd after Passing McAlpine Rd. See Sign..



AlabamaLandAgent.com

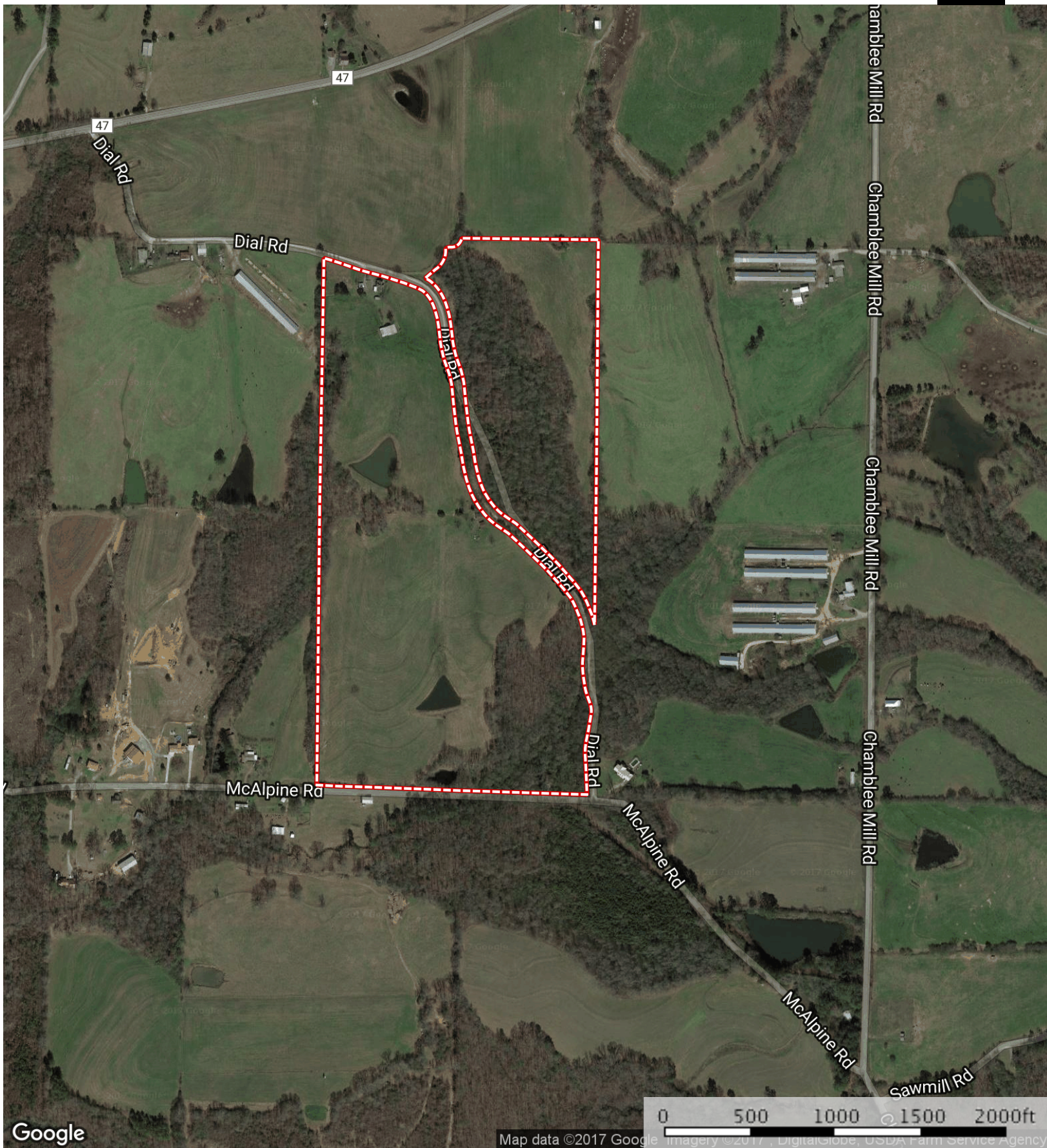
Land • Farms • Lake Property

Lovejoy Realty

Chad Camp

(205) 478-4974

www.LovejoyRealty.com

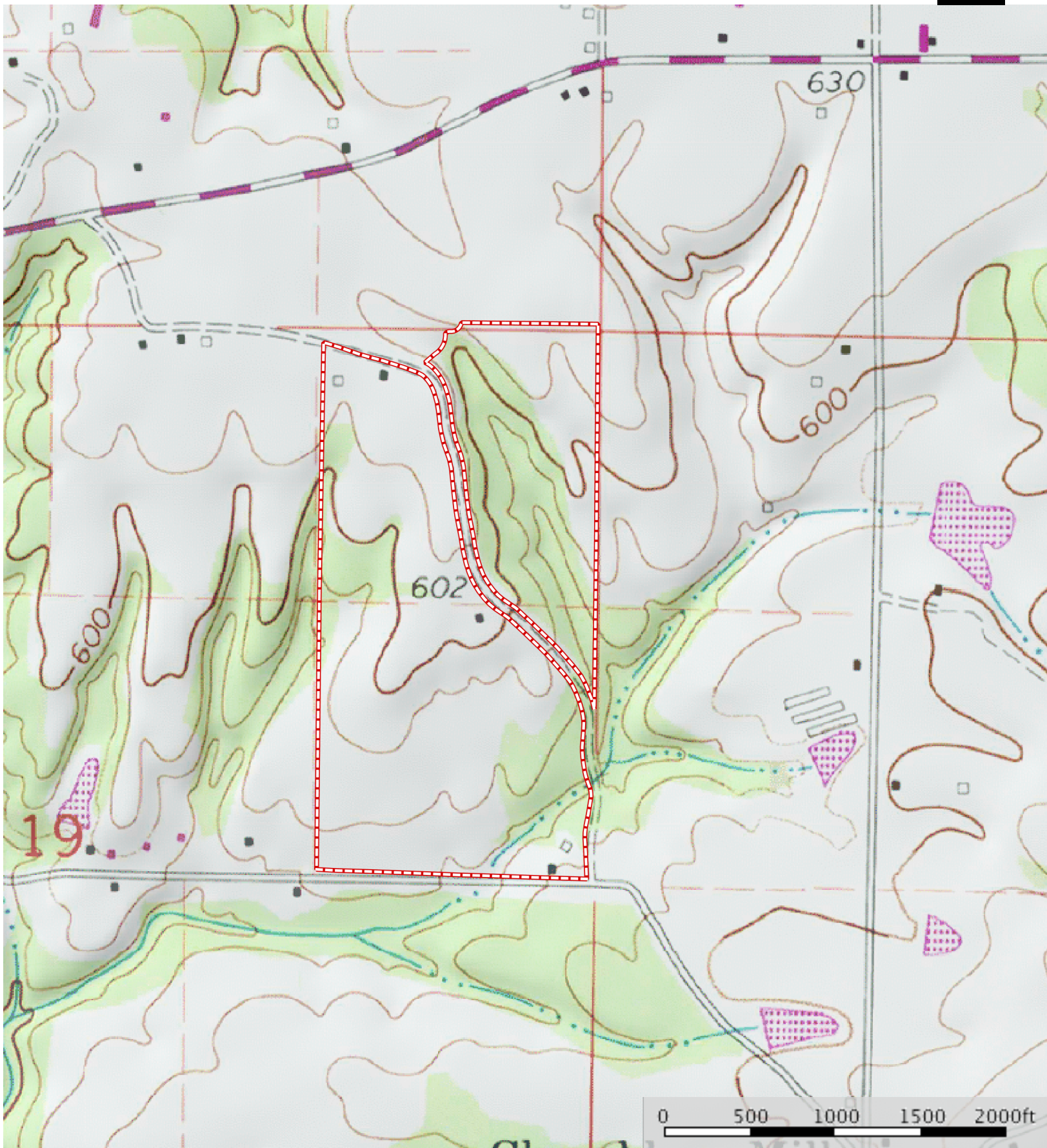



Google

Map data ©2017 Google Imagery ©2017 DigitalGlobe, USDA Farm Service Agency

76.88 Acres

NOT A SURVEY



 76.88 Acres

NOT A SURVEY