



**AlabamaLandAgent.com**

**Land • Farms • Lake Property**

**Chad Camp  
205-478-4974**

*197 +/- ACRES*

*Altoona, AL - GPS 33.944135, -86.356988*

*Adventure away from Birmingham within 50 Minutes and Hunt, Camp, Fish & Explore Rock Bluffs and Trail Riding with Friends and Family.*

*Located just on the inside of Etowah County on Dailey Chapel and Jackson Trail. It's only 15 Minutes off Interstate I-59. It's a quaint getaway to Build the Cabin or Cabins of your dream above the gorgeous 2+/- Acre Lake. Thousands of feet on Hurricane Creek and the Upper Locust Fork Black Warrior River. Miles of trail riding opportunities to turn family and friends loose for ATV or Horseback Riding. Several locations to Build a Barndominium or Horse Barn. Pine Timber with Hardwood Bottoms along the Creeks. Enjoy the sounds of Hurricane Creek as Gushing Whitewater rolls over boulders and rocky bottoms. Beautiful Bluff Outcroppings to Explore and climb. Nap on Hammocks along the Bluff or beside Hurricane Creek. Various plants to explore and identify such as ferns, Mount Lauren and Trillium. Deer hunting opportunities on a 4.5 Acre Field for Shooting houses along the Upper Locust Fork Black Warrior. Multiple locations throughout the entire property for additional green fields too. This is a wide and deep property to explore. This could be that generational property for potential buyers looking to hold and past down. Well is on the property. Power and well on the property. Paved road frontage and Public water available at the road.*

*Directions: From Birmingham: Go I-59 to Ashville Exit 166. Turn left and go North. Take Dailey Chapel Road. Property on the left just before the Bridge.*

**Chad Camp  
(205) 478-4974**



**AlabamaLandAgent.com**

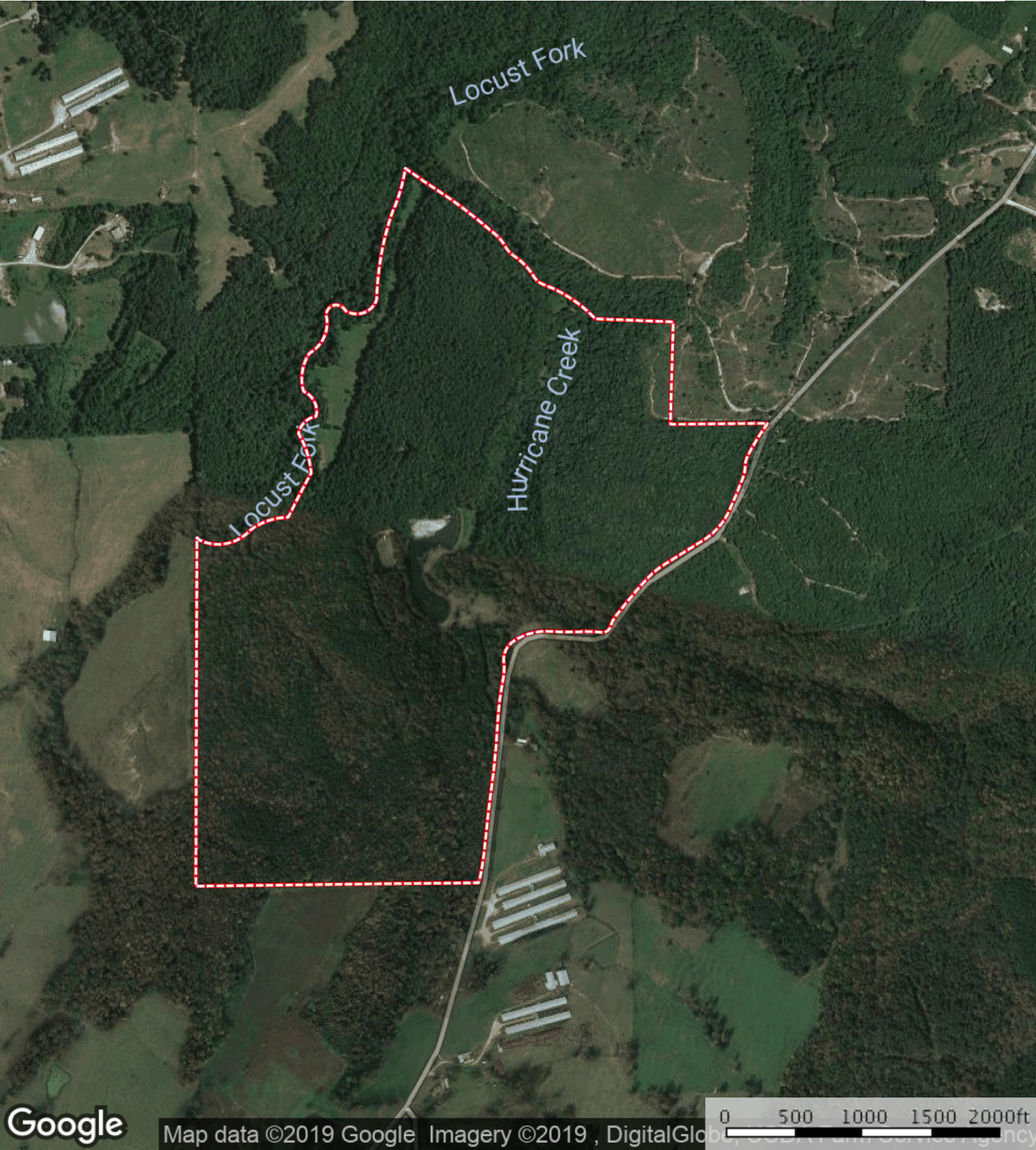
**Land • Farms • Lake Property**





Locust Fork / Hurricane Creek on Dailey's Chapel Road

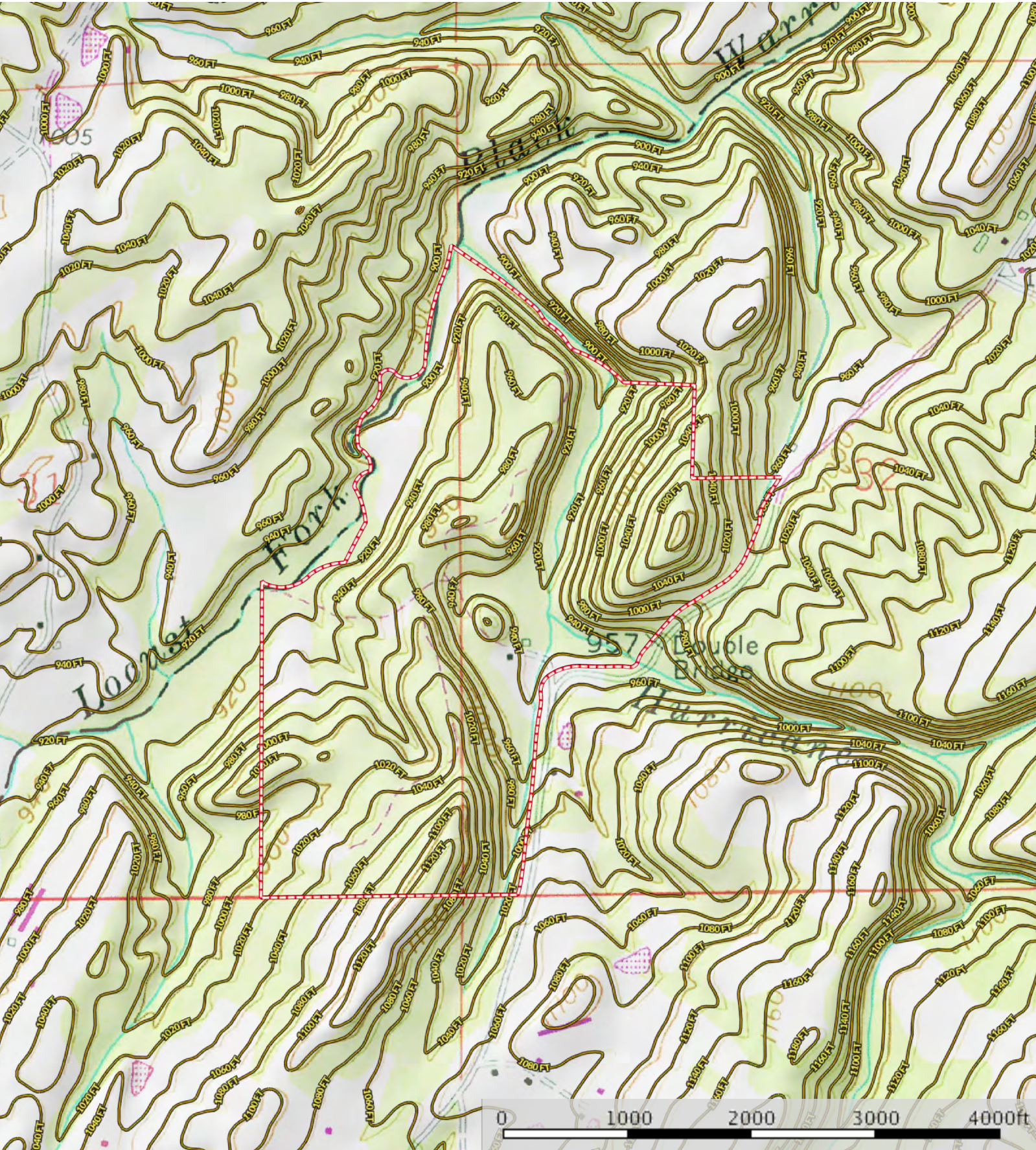
Alabama, AC +/-



Boundary



Locust Fork / Hurrigan Creek on Dailey's Chapel Road  
Alabama, AC +/-



Boundary



Locust Fork / Hurrigan Creek on Dailey's Chapel Road  
Alabama, AC +/-



Boundary