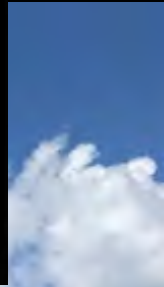
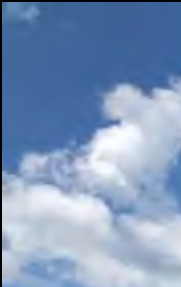




AlabamaLandAgent.com

Land • Farms • Lake Property

**Chad Camp
205-478-4974**



47 +/- ACRES

Ashville, AL ~ GPS 33.76735, -86.33144

Scenic 47+/- Acres with Approximate 9 Acres Pasture Land. Will need fencing for livestock. Great for homesteading for multi-generational families. Multiple homes sites and could have Gorgeous Views looking over pasture land. Water and Power on the county road. Established well maintained chert road through the interior of the property. You can pay for the property with a Chert Business. Tract Hoe extra at \$25,000.

Directions: Birmingham: Go I-59 to Springville Exit. East on Hwy 23 to Ashville. Right on Co Rd 31. Property on the left after pass Bucks Valley Rd.

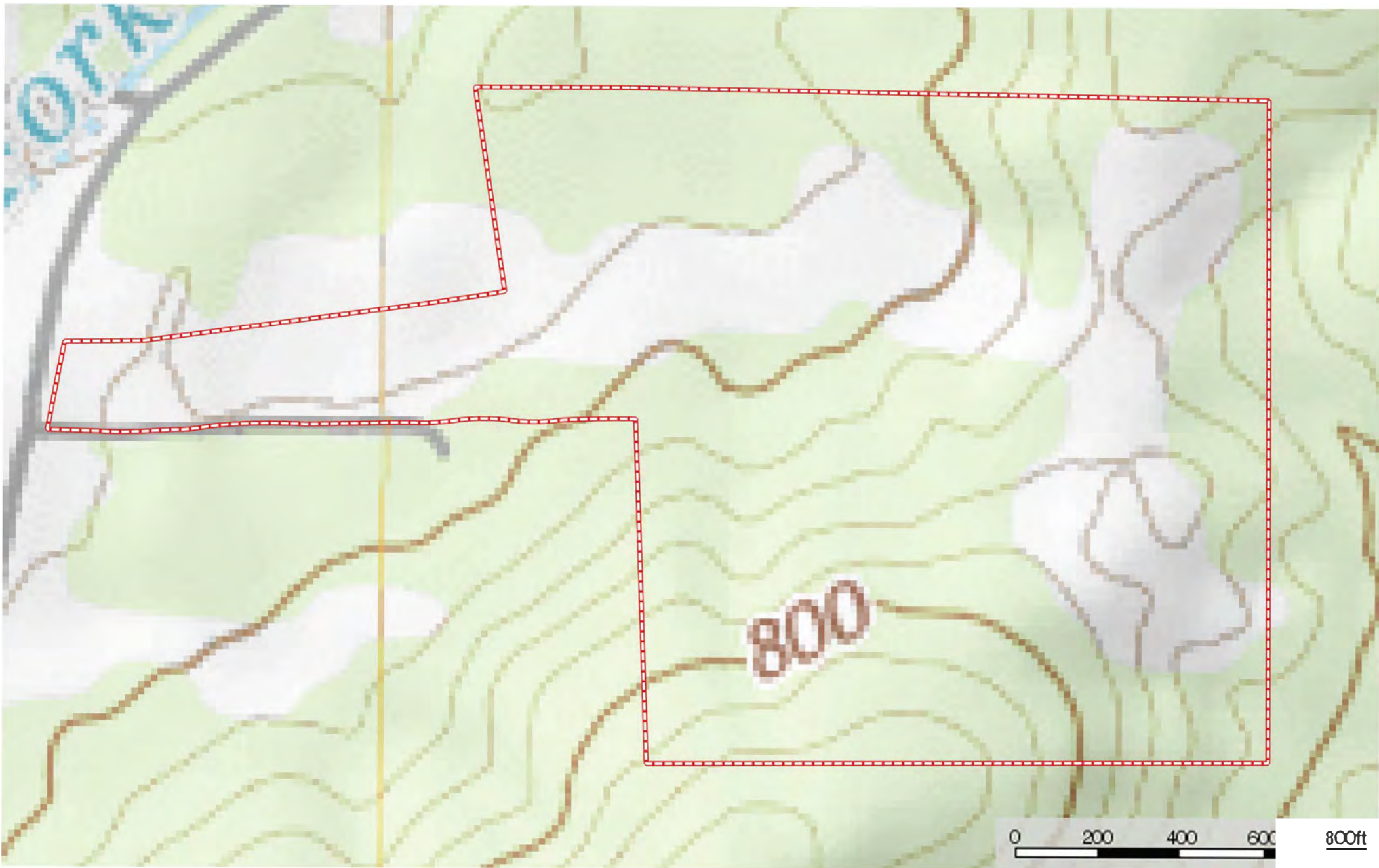
**Chad Camp
(205) 478-4974**




AlabamaLandAgent.com
Land • Farms • Lake Property



St. Clair - Ashville - Co Rd 31 47+/- Ac
Alabama, AC +/-



 Boundary

chad camp

